

220 ICLEAN is the ideal partner for all professionals who need excellent suction performance and excellent filtering capacities.

A concentrate of power and reliability enclosed in an extremely robust and compact instrument.

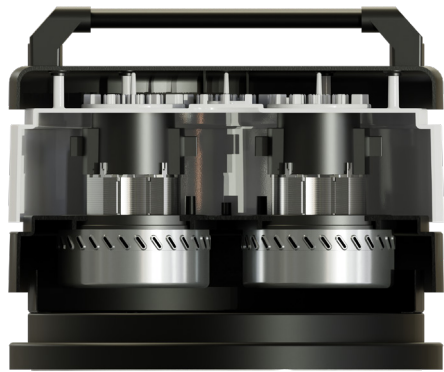
It finds its ideal application in construction, in body shops or in any sector that requires a practical vacuum cleaner, with good maneuverability for the suction of fine dust, whether connected to power tools, sanders or used as a simple work tool.

TECHNICAL FEATURES

SLINE ICLEAN

| MODELS | 220 ICLEAN  |
|------------------------------------|--|
| MOTORIZATION | n°2 By-pass |
| POWER | 2200 W |
| VOLTAGE | 230 V |
| FREQUENCY | 50/60 Hz |
| AMPERAGE | 9,6 A |
| AIRFLOW | 340 m³/h |
| DEPRESSION | 230 mBar |
| Ø NOZZLE | Tangential Ø 60 mm |
| BODY DIAMETER | Ø 400 mm |
| DIMENSIONS | 54x58x85 cm |
| WEIGHT | 36 Kg |
| FILTERING SYSTEM | 220 ICLEAN |
| FILTER TYPE | 2x Cartridge |
| PRIMARY FILTER - SURFACE | 5200 cm² |
| FILTER MEDIA | HEPA+PTFE |
| SECONDARY FILTER | NO |
| FILTER CLEANING | Automatic |
| COLLECTION SYSTEM | 220 ICLEAN |
| CAPACITY | Barrel 20l |
| LONGOPAC BARREL INTERCHANGEABILITY | NO |





◀ 2 By-pass motors



◀ Motorhead with automatic cleaning system I CLEAN



◀ Easy barrel release system

FINE DUST

220 I CLEAN

SLINE

Cleaning options ▶

VIBRATION
I CLEAN

TOOL version
available ▶

Tangential inlet ▶

