

The 235 ICLEAN model, an increased evolution compared to the more contained 220 ICLEAN, stands out for its greater filtering capacity and greater capacity.

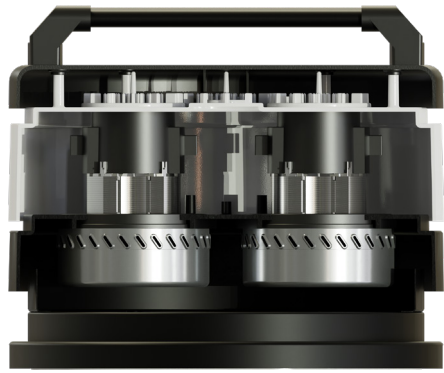
The reinforced trolley compared to the previous one allows it to be used in industrial environments with heavier applications, especially those relating to coupling to machinery that generate greater quantities of fine dust.

TECHNICAL FEATURES



MODELS	235 ICLEAN 
MOTORIZATION	n°2 By-pass
POWER	2200 W
VOLTAGE	230 V
FREQUENCY	50/60 Hz
AMPERAGE	9,6 A
AIRFLOW	340 m³/h
DEPRESSION	230 mBar
Ø NOZZLE	Tangential Ø 60 mm
BODY DIAMETER	Ø 400 mm
DIMENSIONS	65x50x111 cm
WEIGHT	42 Kg
FILTERING SYSTEM	235 ICLEAN
FILTER TYPE	2x Cartridge
PRIMARY FILTER - SURFACE	8000 cm²
FILTER MEDIA	HEPA+PTFE
SECONDARY FILTER	NO
FILTER CLEANING	Automatic
COLLECTION SYSTEM	235 ICLEAN
CAPACITY	Barrel 35l
LONGOPAC BARREL INTERCHANGEABILITY	YES





◀ 2 By-pass motors



◀ Motorhead with automatic cleaning system ICLEAN



◀ Easy barrel release system

FINE DUST

235 ICLEAN

SLINE

Cleaning options ▶

VIBRATION
ICLEAN

TOOL version
available ▶

Tangential inlet ▶

