

The 350 ICLEAN model is the single-phase 3-motor vacuum cleaner par excellence. Model most appreciated by those who use it in daily work, especially in the field of surface treatment. It proves to be the most efficient single-phase vacuum cleaner in the world for the suction of fine dust, deriving from machines in production such as sanders. Its field of application is not limited to construction, but ranges in many sectors in which fine dust represents a difficult problem for conventional industrial vacuum cleaners.

## TECHNICAL FEATURES

## SLINE ICLEAN

## MODELS

350 ICLEAN 

MOTORIZATION	n°3 By-pass
POWER	3300 W
VOLTAGE	230 V
FREQUENCY	50/60 Hz
AMPERAGE	14,4 A
AIRFLOW	340 m³/h
DEPRESSION	510 mBar
Ø NOZZLE	Tangential Ø 60 mm
BODY DIAMETER	Ø 400 mm
DIMENSIONS	80x60x118 cm
WEIGHT	65 Kg

## FILTERING SYSTEM

350 ICLEAN

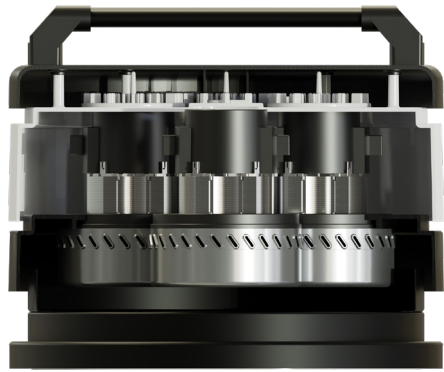
FILTER TYPE	3x Cartridge
PRIMARY FILTER - SURFACE	8000 cm²
FILTER MEDIA	HEPA+PTFE
SECONDARY FILTER	NO
FILTER CLEANING	Automatic

## COLLECTION SYSTEM

350 ICLEAN

CAPACITY	Barrel 50l
LONGOPAC BARREL INTERCHANGEABILITY	YES





◀ 3 By-pass motors



◀ Motorhead with automatic cleaning system ICLEAN



◀ Easy barrel release system

FINE DUST

350 ICLEAN

SLINE

Cleaning options ▶

VIBRATION  
ICLEAN

Tangential inlet ▶

