



BASIC WM 250 is the most classic and common single-phase industrial vacuum cleaner. 2 by-pass motors, 50 liter capacity, steel drums and conventional filtration with stellar filter. This model responds to many non-specific applications in the industrial field.

TECHNICAL FEATURES

SLINE BASIC

MODELS	WM250 L 	WM250 M 
MOTORIZATION	n°2 By-pass	n°2 By-pass
POWER	2200 W	2200 W
VOLTAGE	230 V	230 V
FREQUENCY	50/60 Hz	50/60 Hz
AMPERAGE	9,6 A	9,6 A
AIRFLOW	340 m³/h	340 m³/h
DEPRESSION	230 mBar	230 mBar
Ø NOZZLE	Central Ø 70 mm	Central Ø 70 mm
BODY DIAMETER	Ø 460 mm	Ø 460 mm
DIMENSIONS	54x58x135 cm	54x58x135 cm
WEIGHT	36 Kg	36 Kg
FILTERING SYSTEM	WM250 L	WM250 M
FILTER TYPE	Stellar polyester	Stellar polyester
PRIMARY FILTER - SURFACE	13.000 cm²	13.000 cm²
FILTER MEDIA	L	M
SECONDARY FILTER	OPT	OPT
FILTER CLEANING	Manual shaking	Manual shaking
COLLECTION SYSTEM	WM250 L	WM250 M
CAPACITY	Barrel 50l	Barrel 50l



13.000 cm²



OPTIONAL
SECONDARY HEPA FILTER

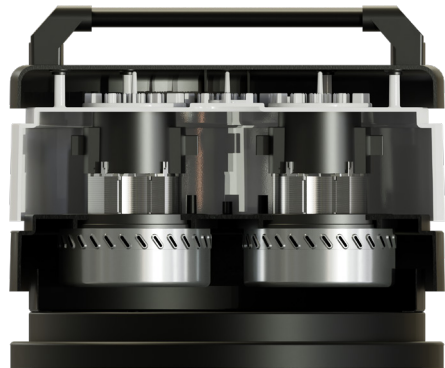


DUST AND LIQUIDS

BASIC WM250

SLINE

Central inlet



2 By-pass motors

Easy system for
undocking the
barrel

