

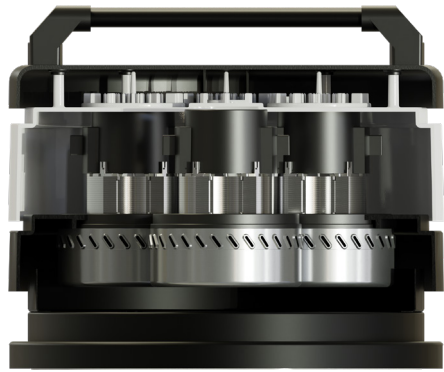
S3M ICLEAN is a 350 ICLEAN direct derivation 3-motor vacuum cleaner, strengthened with a new trolley and with characteristics of great versatility and ease of use. The main field of application remains the suction of fine dust, where it stands out for its effectiveness and reliability, confirming itself as one of the best products on the market.

TECHNICAL FEATURES



MODELS	S 3M ICLEAN 230V	S 3M BAG ICLEAN
MOTORIZATION	n°3 By-pass	n°3 By-pass
POWER	3600 W	2400 W
VOLTAGE	230 V	110 V
FREQUENCY	50/60 Hz	50/60 Hz
AMPERAGE	14,4 A	14,4 A
AIRFLOW	510 m³/h	450 m³/h
DEPRESSION	230 mBar	200 mBar
Ø NOZZLE	Tangential Ø 60 mm	Tangential Ø 60 mm
BODY DIAMETER	Ø 370 mm	Ø 370 mm
DIMENSIONS	80x66x142 cm cm	80x66x142 cm cm
WEIGHT	74 Kg	74 Kg
FILTERING SYSTEM		
	S 3M ICLEAN	S 3M BAG ICLEAN
FILTER TYPE	3x Cartridge	3x Cartridge
PRIMARY FILTER - SURFACE	20.500 cm²	20.500 cm²
FILTER MEDIA	HEPA+PTFE	HEPA+PTFE
SECONDARY FILTER	NO	NO
FILTER CLEANING	Automatic	Automatic
COLLECTION SYSTEM		
	S 3M ICLEAN	S 3M BAG ICLEAN
CAPACITY	Barrel 100l	Longopac
LONGOPAC BARREL INTERCHANGEABILITY	YES	YES





◀ 3 By-pass motors



◀ Motorhead with automatic cleaning system ICLEAN



◀ Easy barrel release system

FINE DUST

S 3M ICLEAN

SLINE

Cleaning options ▶

VIBRATION
ICLEAN

Tangential inlet ▶



Longopac® continuous bag collection system ▶

