


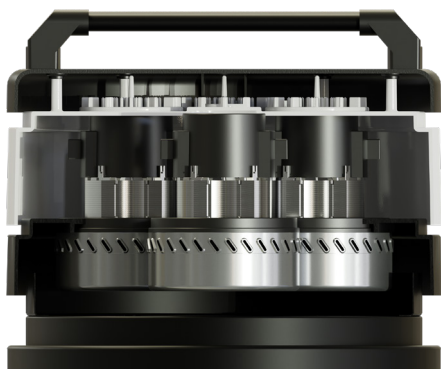
SMART 350 WD is a single-phase wet / dry vacuum cleaner with 3 motors, designed to meet all industry needs and the ideal partner to entrust with general or specific cleaning of machinery. It is a multifunctional model, essential for the mechanical sector as it is suitable for vacuuming dust, solids, oils and metal shavings.

TECHNICAL FEATURES

SLINE SMART

MODELS	350WD 
MOTORIZATION	n°3 By-pass
POWER	3300 W
VOLTAGE	230 V
FREQUENCY	50/60 Hz
AMPERAGE	14,4 A
AIRFLOW	510 m³/h
DEPRESSION	230 mBar
Ø NOZZLE	Tangential Ø 60 mm
BODY DIAMETER	Ø 460 mm
DIMENSIONS	80x60x118 cm
WEIGHT	65 Kg
FILTERING SYSTEM	350WD
FILTER TYPE	Cartridge
PRIMARY FILTER - SURFACE	13.000 cm²
FILTER MEDIA	M Conductive
SECONDARY FILTER	NO
FILTER CLEANING	Semi automatic - Push button
COLLECTION SYSTEM	350WD
CAPACITY	Barrel 50l





◀ 3 By-pass motors



◀ Head with integrated semi-automatic filter cleaning system. Activated by push button.

Ingresso di tipo tangenziale ▶



◀ Cartridge filters available with conductive M or HEPA filter media

◀ Filter protection to optimize the cyclonic effect, lowering air velocity towards the bottom, increasing filtering efficiency and avoiding premature clogging of the filter. It also acts as a protection from abrasive materials or liquids, keeping the filter dry.



▶ Electric float sensor

◀ Chip separator bucket

